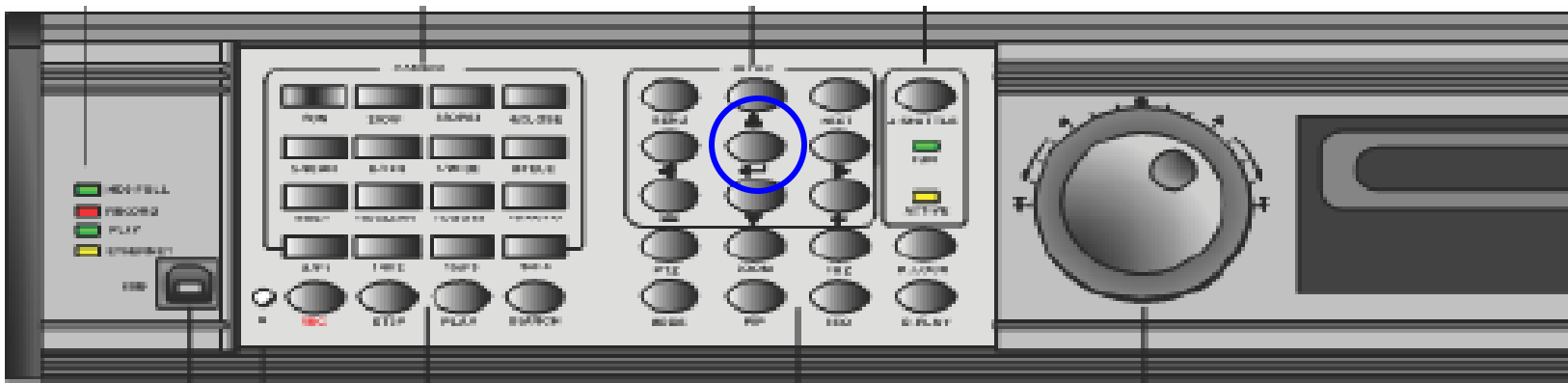


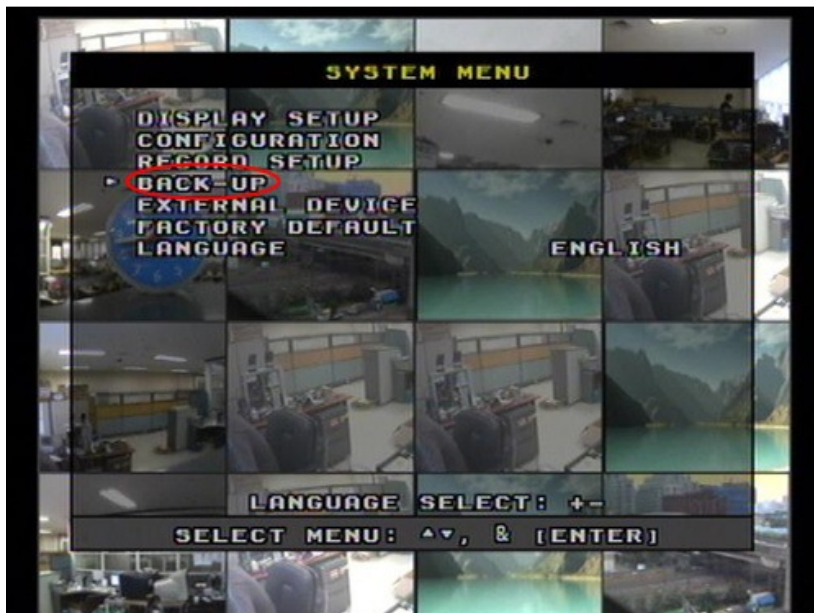
BACK UP FOR JPEG 2000 SERIES

PRESS ON THE MENU BUTTON .

AT THE LOG ON PAGE, PUT YOUR PASSWORD
(THERE'S NO PASSWORD AS A DEFAULT:
JUST PRESS ON THE ENTER BUTTON OR THE
ARROW BUTTON)



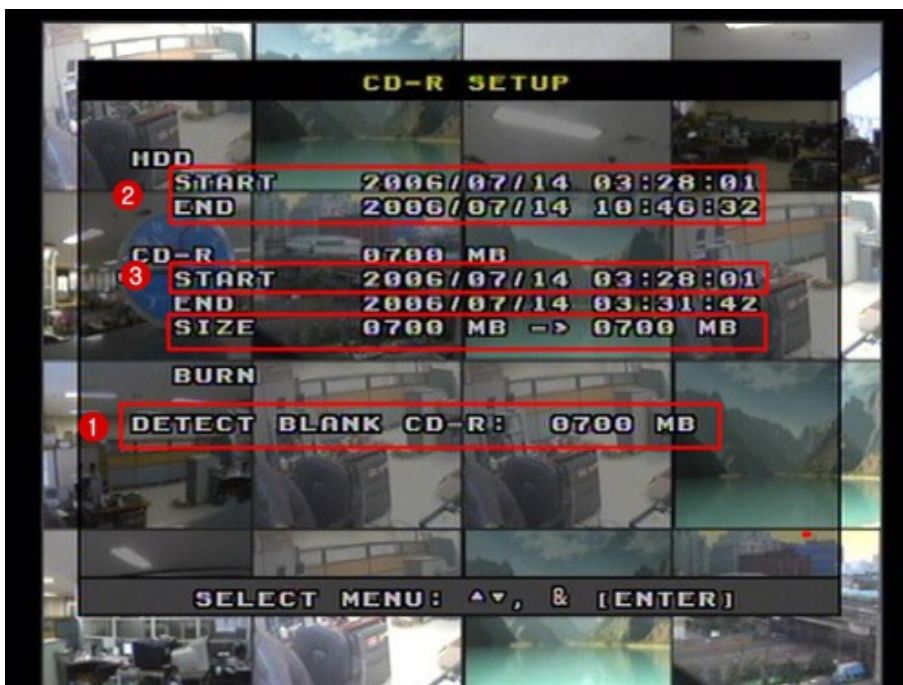
FROM THE MENU, GO TO BACK UP AND PRESS ENTER BUTTON



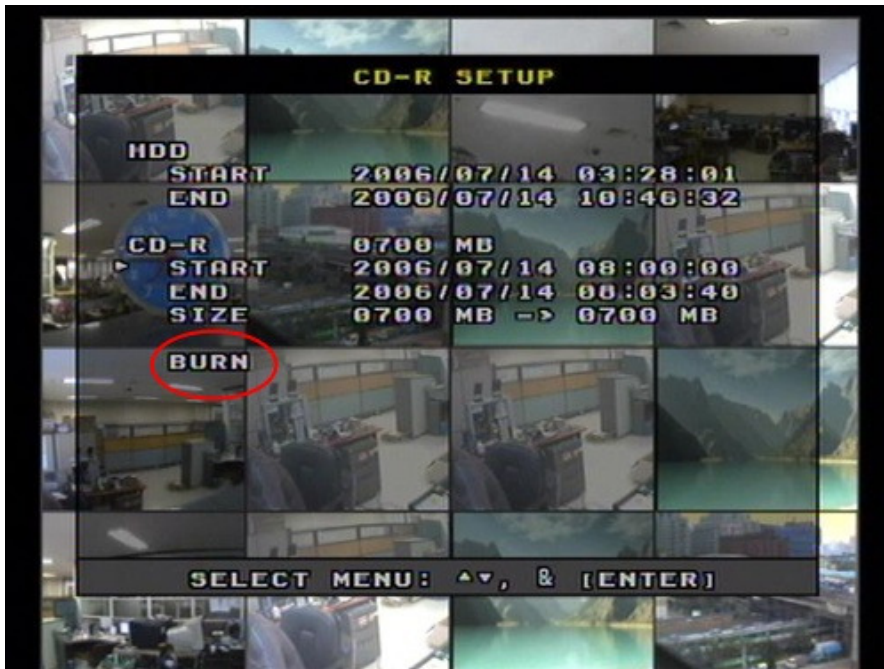
PRESS ENTER KEY ONE MORE TIME AT THE CD-R SETUP.



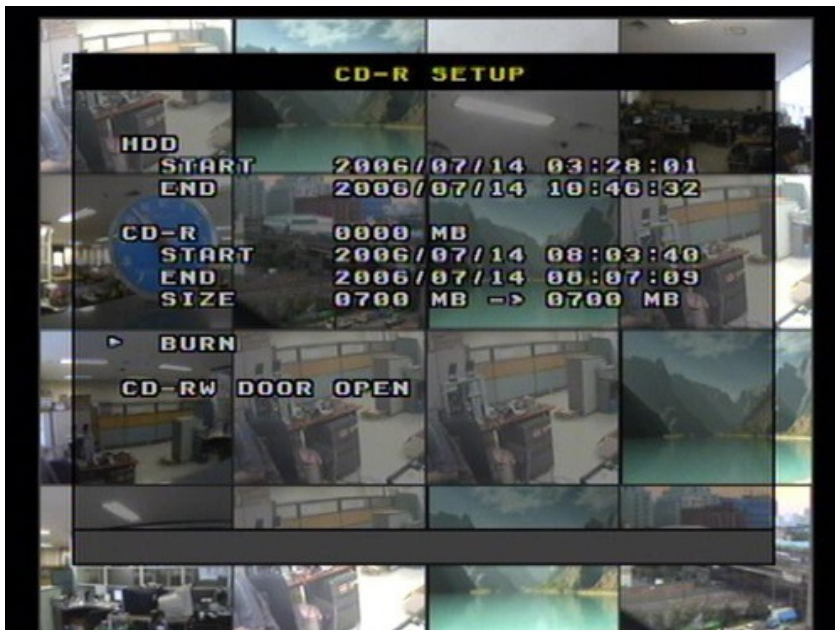
- 1) MAKE SURE YOU PUT A BLANK CD-R IN THE CD ROM OF THE DVR
- 2) PUT A START TIME HERE (MAKE SURE YOU HAVE DATA FOR THE SELECTED TIME(GO TO SEARCH AND SEE IF YOU CAN SEE IMAGE))
- 3) SET THE END TIME BY ADJUSTING THE SIZE.



WHEN YOU'RE DONE WITH THE SETTINGS, GO DOWN TO BURN AND PRESS ENTER



WHEN THE BURNING PROCESS ENDS, THE CD WILL COME OUT AUTOMATICALLY.



YOU HAVE TO USE A SOFTWARE TO PLAY BACK.

YOU MAY INSTALL THE PLAY BACK SOFTWARE FROM THE PROGRAM CD
COMES WITH THE DVR, OR YOU MAY PLAY FROM THE WEB PLYAER.